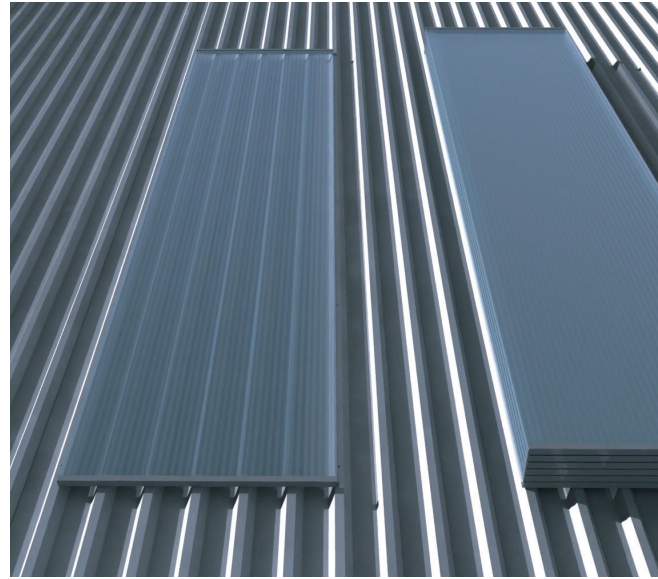
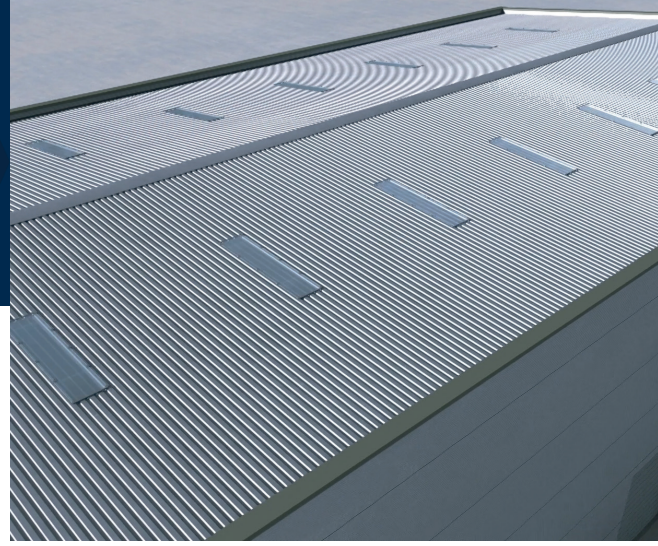


# Easipanel

reflective roof light cover



Easipanel is a **reflective roof light cover** designed for factories and warehouses where there is a requirement to **reduce heat and/or glare** and **UV from entering via roof lights**.

Multiwall polycarbonate sheets are **custom designed** and installed to suit your buildings bespoke roof light configuration and maintain more natural light than painting panels.



Maintain up to 50% Natural Light



Heat Reduction up to 50%



Quick Installation



No Lasting Damage to Building



Bespoke Bracket for Secure Grip

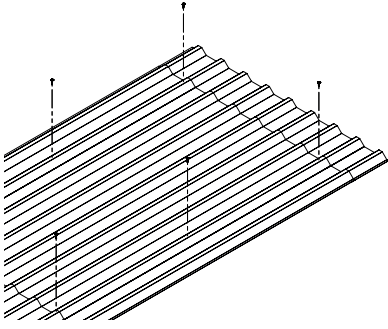


10 Year Panel Guarantee

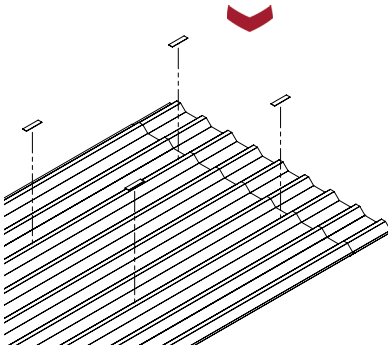
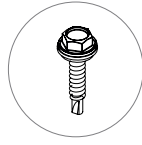
## Features and Benefits

25mm double coated polycarbonate panel	<ul style="list-style-type: none"> <li>• Offers maximum heat and glare reduction</li> <li>• Retains up to 50% natural light</li> <li>• Diffuse light to maintain safe levels of glare</li> </ul>
Up to 50% heat reduction	<ul style="list-style-type: none"> <li>• Prevent product spoilage from heat and UV</li> <li>• Maintain consistent temperatures on mezzanine floors</li> </ul>
1.4 W/m <sup>2</sup> K insulation	<ul style="list-style-type: none"> <li>• Maintain and regulate consistent temperatures inside reducing the load on cooling systems</li> </ul>
Fire retardant: EN 13501: B-s1, d0	<ul style="list-style-type: none"> <li>• Certified fire retardancy</li> <li>• Peace of mind about your building</li> </ul>
Bespoke fabricated brackets	<ul style="list-style-type: none"> <li>• Ensures panels are securely fastened in place</li> </ul>
Existing screw holes used during installation	<ul style="list-style-type: none"> <li>• Prevent additional damage to your building; good for rented premises</li> </ul>
Butyl tape used under each bracket	<ul style="list-style-type: none"> <li>• Prevents corrosion between new and old metals</li> <li>• Maximises integrity of the roof structure</li> </ul>
10 year panel guarantee	<ul style="list-style-type: none"> <li>• Peace of mind against UV degradation</li> </ul>

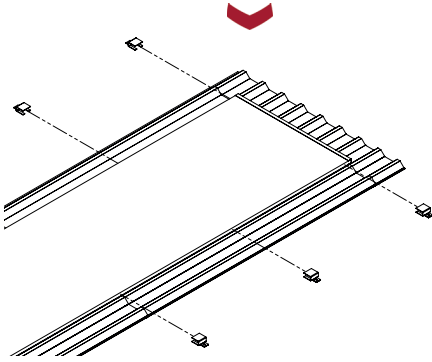
## Installation



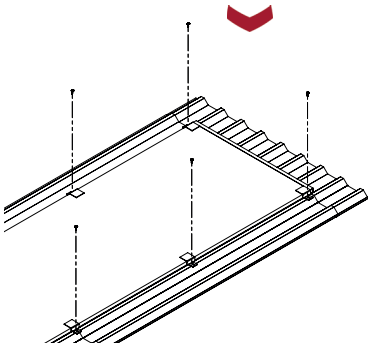
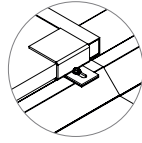
Old screws and washers removed.



Sealing tape is placed on the roof to help position the panel in place.



Bespoke fabricated brackets are lined up with existing screw holes.



New screws and bonded galvanised washers secure each bracket and panel in place.



This fact sheet is for illustrative purposes only and based on the latest information at the time of print. Installation methods may vary depending on specific project requirements. Westgate Global reserve the right to make changes at any time without notice.

J253-WSC-PFS-EP-200224 © Westgate Global Ltd

## Technical Specifications

Standard Panel Size	1m (w) x 2m (l) (bespoke available on request)
Material Composite	25mm double coated polycarbonate panel
Fixing Method	Bespoke fabricated brackets secured with bonded galvanised screws and washers (as standard one bracket per linear meter)
Light Retention	Up to 50% (depending upon environment)
Heat Reduction	Approx. 50%
U-Value (insulation)	1.4 W/m <sup>2</sup> K
Guarantee	10 year panel guarantee

Installation methods and components used ensure no damage to the existing roof or roof lights and panels can also be removed without lasting damage.

